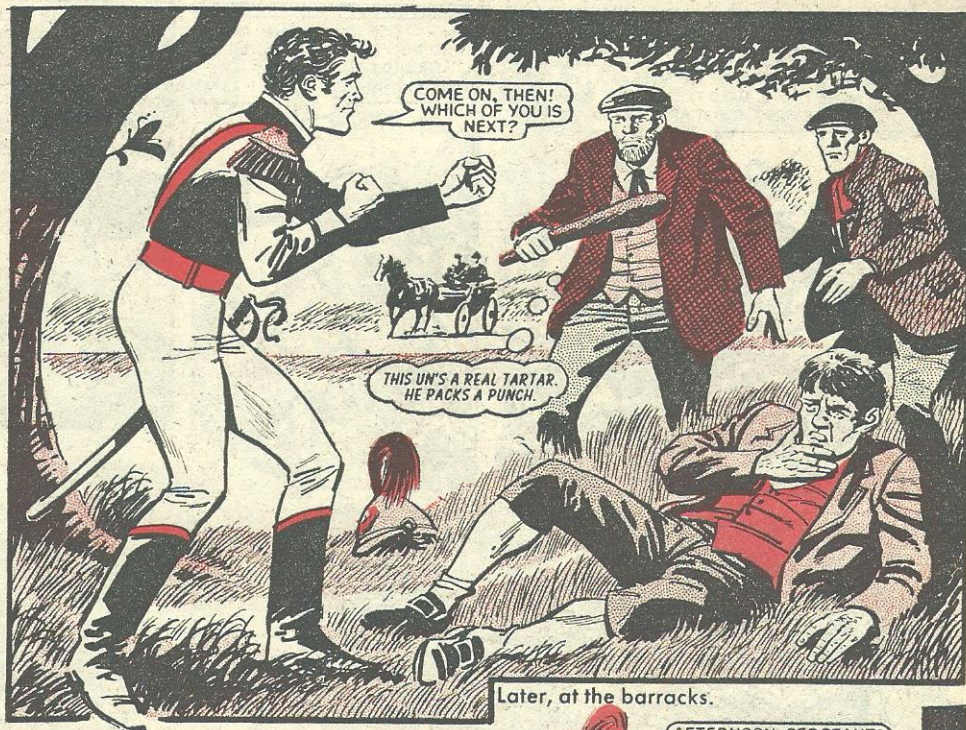
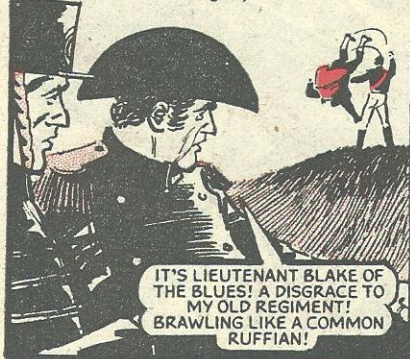


BLAKE OF THE BLUES

LEUTENANT JOHN BLAKE, of the Blues, walking across the open spaces of Hyde Park in London in 1840, was set on by three toughs. However, the toughs had picked the wrong man in Blake!



General Slade, late of the Blues, was driving by.



Later, at the barracks.



The adjutant was waiting for Blake.



Later, in front of the Colonel.



The penal battalions were formed in the colonies to accommodate men who had committed army crimes, in most cases minor offences. Promotion was much quicker in these battalions than in the army at home, as many of the men never survived the two-year spell which they had to do. The penal battalions were stationed in places which had dreadful climates and frequent native uprisings.



When Blake returned to his room—

